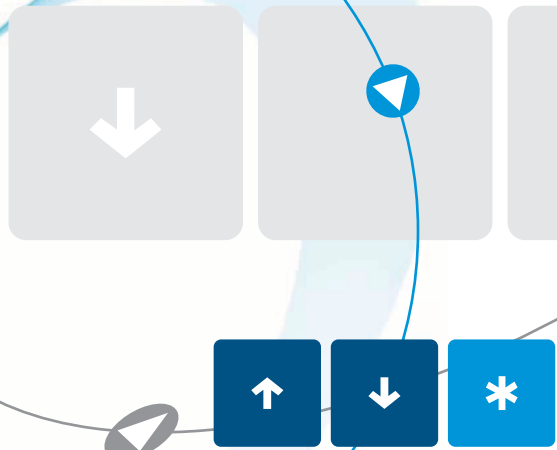


Product Group  
Softstarters



## Product Group Softstarters

PETER electronic sets your machines intelligently in motion, controls them reliably, and brings them to a standstill in a controlled way. Our comprehensive range of products includes braking devices, frequency inverters, thyristor controllers and soft starters. PETER electronic's soft start systems enable low-wear and gentle starting of your machines and plants by preventing unnecessary, jerky motions and high mechanical stress as well as current peaks otherwise occurring during the start-up of motors. Our soft start systems offer you convincing advantages:

Reduction of your routine maintenance costs

Extended lifetime of your equipment

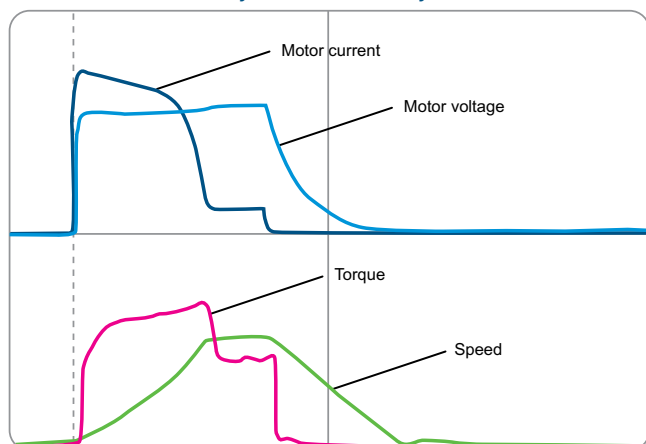
Competent technical support

Development of individual solutions

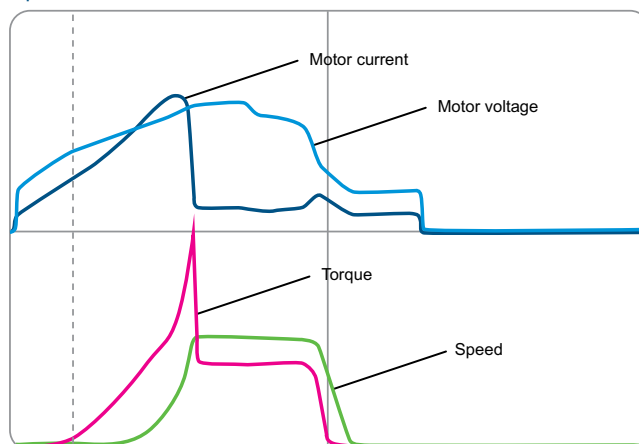
Quality and service – “made in Germany“

### Advantages of soft start as compared to direct start

Ac- and deceleration – Asynchr. motor directly connected to mains



Optimized motor start with soft starter



## Economy Line Single-phase Softstarters



CE

### Softstarters SAS 3 ... 11

#### Features:

- for pole-changing motors
- dual-voltage, for 400V and 230V networks
- special voltages up to 640V
- function-related peak current reduction
- integrated bypass relay
- also for single-phase applications

#### Functions:

soft start, 2 separately adjustable parameters (starting torque, starting time), control contact for pole-changing

## Two-phase Softstarters



CE cUL US LISTED

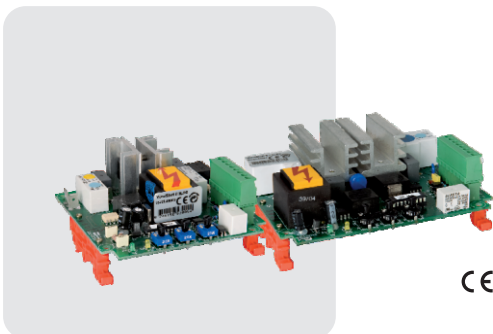
### Softstarters VersiStart II 3,5 ... 16

#### Features:

- two-phase controlled soft starter
- controlled by microcontroller
- current and torque reduction during acceleration
- optimized soft start
- integrated bypass relay
- no additional control voltage required
- economically priced substitute for star-delta starters
- compact design, 45mm

#### Functions:

soft acceleration and deceleration, potential-free control input for soft acceleration and deceleration, 3 separately adjustable parameters: accel. time, start voltage, decel. time boost-start selectable, potential-free relay output for operating state, unit bypassed – and failure (optional)



CE

### Softstarters VersiStart II ... LDS

#### Features:

- controlled by microcontroller
- circuit-board version for mounting onto DIN rail
- plug-in control terminals
- economically priced substitute for star-delta starters
- integrated bypass relay

#### Funktionen:

soft acceleration and deceleration, potential-free control input, 3 separately adjustable parameters, two-wire or three-wire control via contact or voltage, boost start

## Economy Line Two-phase Softstarters

### Softstarters VersiStart II 17 ... 45A



#### Features:

- two-phase controlled soft starter
- controlled by microcontroller
- optimized soft start
- connection in the motor delta winding (cost saving via smaller rating)
- current and torque reduction during acceleration
- easy mounting, for snap-mounting on 35 mm standard rail
- integrated bypass relay
- parameterization by means of three potentiometers
- no additional control voltage required
- no mains neutral conductor (N) required
- economically priced substitute for star-delta starters
- plug-in power terminals
- control outputs with spring-loaded terminals
- heat sink temperature monitoring
- compact design, 45mm up to 32A and 52,5mm at 45A
- degree of protection IP20

#### ▣ Functions:

soft acceleration and deceleration, potential-free control input for soft acceleration and deceleration, 3 separately adjustable parameters: accel. time, start voltage, decel. time  
boost-start selectable, potential-free relay output for operating state, unit bypassed – and failure



in preparation

### Softstarters VersiStart II plus ...-38...105

#### Features:

- two-phase controlled soft starter
- controlled by microcontroller
- optimized soft start
- current and torque reduction during acceleration
- easy mounting, for snap-mounting on
  - 35 mm standard rail (38-65A-Devices)
  - 35 mm und 75mm standard rails (80-105A- Devices)
  - or directly mountable
- integrated bypass relay
- parameterization by means of three potentiometers
- no mains neutral conductor (N) required
- economically priced substitute for star-delta starters
- Push-In Controlterminals
- heat sink temperature monitoring
- compact design, 55mm at up to 65A and 81mm at up to 105A
- degree of protection IP20

#### ▣ Functions:

soft acceleration and deceleration, potential-free control input for soft acceleration and deceleration, 3 separately adjustable parameters: accel. time, start voltage, decel. time  
boost-start selectable, potential-free relay output (closed, when motor is running)

## Economy Line Three-phase Softstarters



CE

### Softstarters VersiStart III 9 ... 45

#### Features:

- three-phase controlled soft starter
- controlled by microcontroller
- optimized soft start and current control
- connection in the motor delta winding (cost saving via smaller rating)
- current and torque reduction during acceleration
- integrated bypass relay
- parameterization by means of potentiometers
- economically priced substitute for star-delta starters
- compact design, 45mm up to 32A and 52,5mm at 45A
- motor protection
- thermal device protection

#### ➔ Funktionen:

soft acceleration and deceleration, potential-free control input for soft acceleration and deceleration, separately adjustable parameters: accel. time, start voltage, decel. time, current limiting, rated device current and tripping class  
boost-start selectable, potential-free relay output for operating state, transistor output – unit bypassed



CE

### Softstarters VersiStart III 9 ... 45 LB

#### Features:

- three-phase controlled soft starter
- controlled by microcontroller
- optimized soft start and current control
- current and torque reduction during acceleration
- integrated bypass relay
- parameterization by means of a potentiometer
- economically priced substitute for star-delta starters
- compact design, 45mm up to 45A
- motor protection
- thermal device protection

#### ➔ Functions:

potential-free control input for soft acceleration and deceleration, potential-free relay output for operating state failure

PETER electronic Quality is our Drive.



## Performance Line Two-phase Softstarters

### Softstarters VersiStart VS p II ... C1/C2

#### Features:

- two-phase controlled digital soft starter (11-800kW)
- integrated bypass
- current and torque reduction during acceleration
- USB port
- comprehensive and customizable motor operating performance
- display graphical LCD-real time graphs of motor operating performance
- degree of protection IP20 up to 135A
- motor PTC connection

#### Functions:

remote control inputs (2x fixed, 2x programmable), relay outputs (3x programmable), 24VDC output, analog output, divers soft start/stop control types, units with 690V upon request



## Three-phase Softstarters

### Softstarters VersiStart VS p III ... C1/C2

#### Features:

- three-phase controlled digital soft starter (11-600kW)
- integrated bypass
- current and torque reduction during acceleration
- USB port
- comprehensive and customizable motor operating performance
- display graphical LCD-real time graphs of motor operating performance
- inside delta (6-wire) connection
- degree of protection IP20 up to 135A
- motor PTC connection

#### Functions:

emergency run, 2 motor sets: forward or reverse jog direction, remote control inputs (3x fixed, 2x programmable), relay outputs (3x programmable), 24VDC output, analog output, divers soft start/stop control types, units with 690V upon request

## Overview Softstarters



	single-ph.	two-phase				three-phase		
Range	SAS	VS II	VS II LDS	VS II	VS II plus	VS III	VS III LB	VS p II / III
Type designation	6,5-25A	3,5-16A	6,5-32A	17-45A	38-105A	9-45A	9-45A	24-229A 250-580A 835-1250A
Rated device current								
Applications								
Saws								
Milling machines								
Planers								
Cutting machines								
Dryers								
Conveyors								
Passenger lifts								
Belt drives								
Chain drives								
Traveling/rotary mechanisms								
Mills								
Presses								
Crushers								
Door and gate drives								
Vibrators								
Transformer soft start								
Electric pumps								
Heat pumps								
Vacuum pumps								
Ventilators and fans								
Cranes								
Traveling cranes								
Exhaust systems								
Compressors								
Power agitators								
Centrifuges								
Pressure cleaners								
Vibration screening machines								
Vibrating conveyors								
Offset presses								

Suitable to a limited extent



Very suitable



Our range of products:

Softstarters

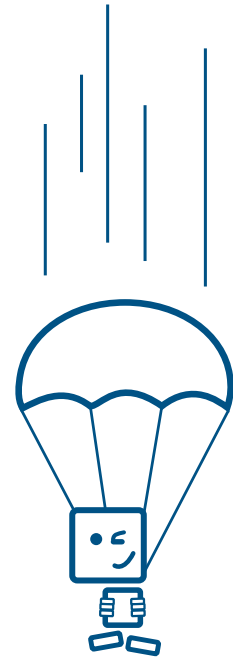
Braking Devices

Motor Start/Brake Combinations

Frequency Inverters

DC-Controllers

Safety Technique



[www.peter-electronic.com](http://www.peter-electronic.com)

