

**Braking Device VersiBrake Safe LP Plc [60A]**

**Features:**

- ❑ braking device as a printed circuit board version
- ❑ DC braking with fully controlled bridge circuit up to 60A
- ❑ a structure without mechanical switching elements in power circuit
- ❑ integrated standstill detection
- ❑ monitoring of stopping time
- ❑ suitable for all asynchronous motors
- ❑ suitable for IE1, IE2 und IE3 motors
- ❑ self-optimizing braking
- ❑ CANopen on board
- ❑ push-in power and control terminals
- ❑ meets trade assoc. requirements for PL = c / SIL1, acc. to EN ISO 13849-1:2016-06 / EN 61508-1:2011-02



**Braking device  
VB S LP Plc [60A]**

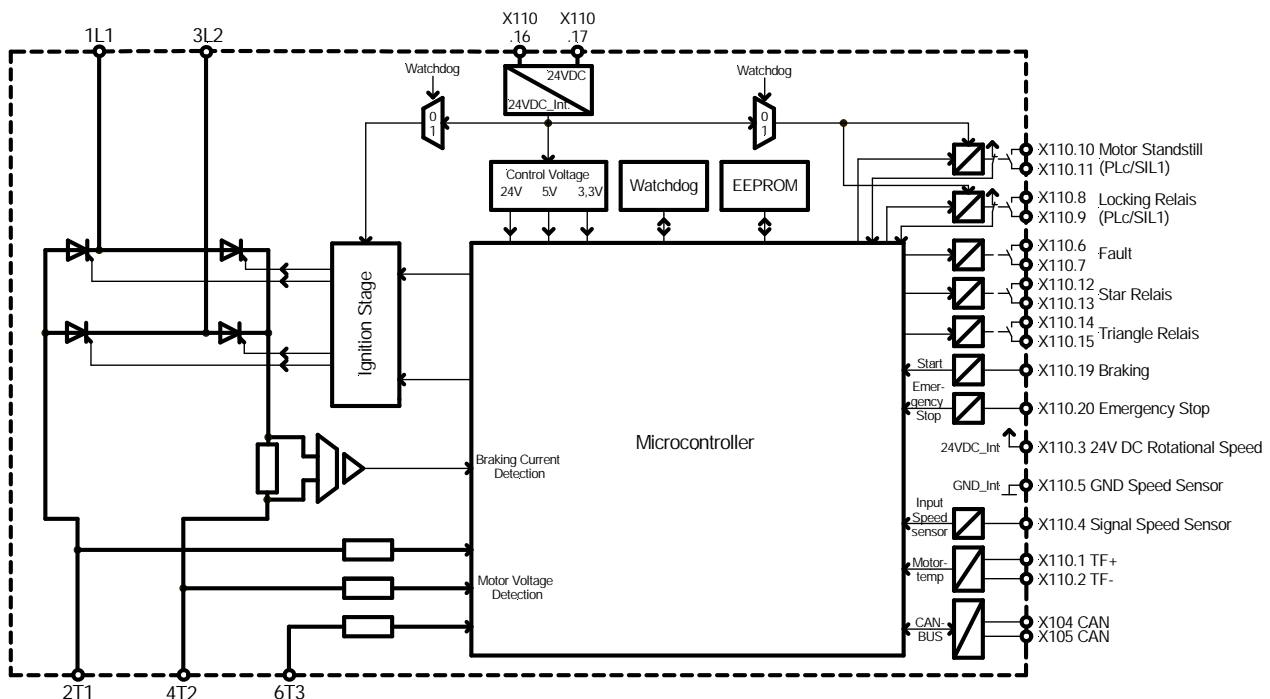


**Function:**

- ❑ parameterization via CAN-Bus
- ❑ potential-free control inputs and outputs
- ❑ motor temperature monitoring (switch, PTC, KTY, PT100)
- ❑ emergency stop function
- ❑ device protection
- ❑ tool speed monitoring (external speed sensor required)
- ❑ safety-related motor standstill relay (safety door interlock)
- ❑ safety-related locking relay
- ❑ fault relay
- ❑ star-delta starting control

**Typical Application:**

- security doors
- vibration sifters
- wood working machines (milling/planing machines)
- grinding machines
- mixer, et cetera

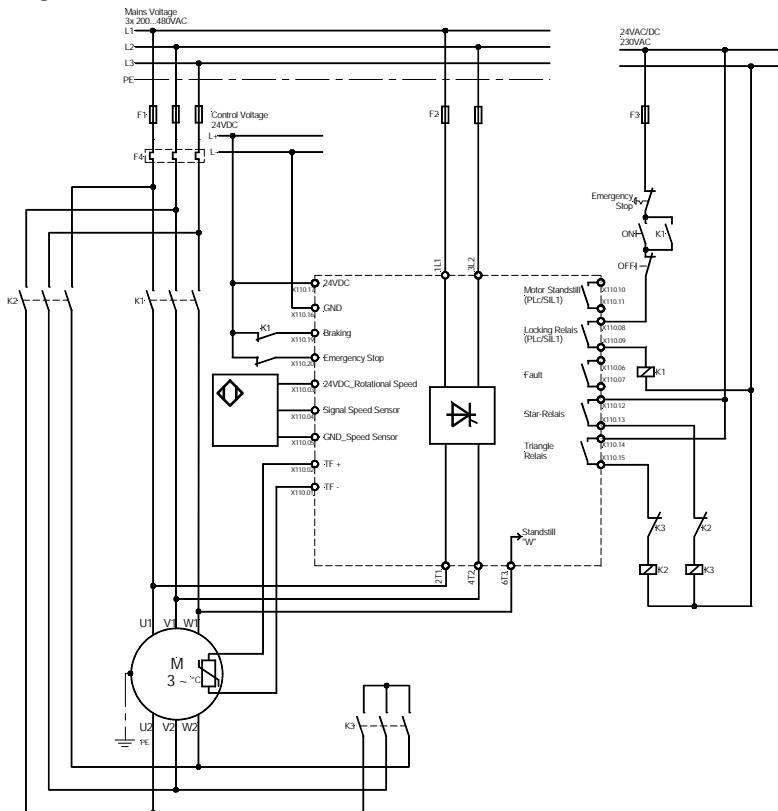


Subject to change without notice.

## Braking Device VersiBrake Safe LP Plc [60A]

type designation	Versibrake Safe LP 480-60 Plc
order number	2B600.48060
device rated current Ie	60A
rated operational voltage Ue	200...480VAC ±10% 50/60Hz
control supply voltage Us	24VDC ±10% / 1,0A
motor rating at Ue 400V	4,0 ... 15kW
switching per hour at t <sub>an</sub> /t <sub>br</sub> = 10s with I <sub>Max</sub> (device) 60A RMS	20
utilization category	AC-53b 1-10:170
max. power dissipation - during operation max. start frequency - standby	approx. 25W approx. 8W
I <sup>2</sup> t(125°) (A <sup>2</sup> s) - thyristors	1800
braking time	self-optimizing (Default 8s)
restart time	200ms
control voltage Uc	24VDC ±10%
input resistance control inputs	5kOhm
contact rating of relay outputs	3A / 250VAC / 30VDC
installation class	3
overvoltage category / degree of pollution: control and auxilliary circuit main circuit	II / 2 III (TT / TN / TI-Netze) / 2
rated impulse withstand voltage U <sub>imp</sub> : control and auxilliary circuit main circuit	2,5kV 4kV
rated insulatin voltage U <sub>i</sub> : control and auxilliary circuit main circuit	24V 480V
max. cross-sectional area for connection solid/flexible: control terminals control terminal with ferrule power terminals	0,2 - 1,5mm <sup>2</sup> / 0,2 - 1,5mm <sup>2</sup> 0,25 - 0,75mm <sup>2</sup> / 0,25 - 0,75mm <sup>2</sup> 0,2...6mm <sup>2</sup> / 0,2...6mm <sup>2</sup>
dimensions (WxHxD)	130x140x65
weight	505g

### Connection Diagram:



Subject to change without notice.