

AC drive FUS 018 ... 220/S312, FUS 037 ... 1500/3S312 0,18kW up to 15kW

Features:

- ☑ integrated mains filter (class A)
- ☑ vector-oriented control algorithms
- ☑ automatic motor adaptation (auto-tuning)
- ☑ integrated PI controller
- ☑ Modbus and CAN open integrated
- ☑ max. output frequency 500Hz
- ☑ user-friendly operating
- ☑ adaptable to various applications
- ☑ degree of protection IP21
- ☑ removable plug-in terminals



AC drive
FUS 018 ... 220/S312
FUS 037 ... 1500/3S312



Function:

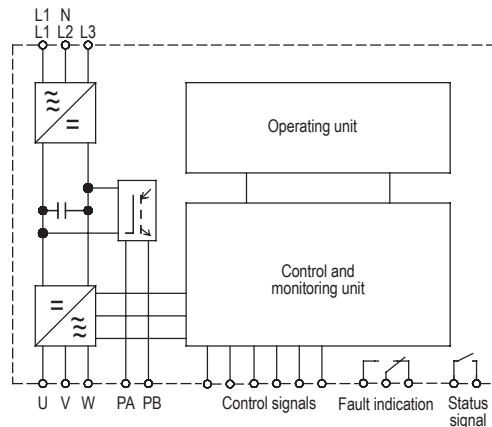
- ☑ speed control
- ☑ protection of motor and inverter
- ☑ 16 fixed frequencies
- ☑ automatic operating time limitation at low frequency
- ☑ multiple assignment of logic inputs
- ☑ motor potentiometer
- ☑ control via software

Typical Applications:

- conveying systems
- pumps and ventilators
- special-purpose machinery
- packaging machines
- textile machinery
- equipment of buildings

Upon Request:

- ☑ Customized Enclosures

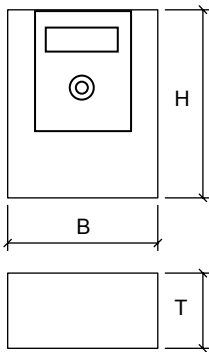


Technical Data	FUS .../S312							FUS .../3S312												
	018	037	055	075	110	150	220	037	055	075	110	150	220	300	400	550	750	1100	1500	
Motor shaft power / kW	0,18	0,37	0,55	0,75	1,1	1,5	2,2	0,37	0,55	0,75	1,1	1,5	2,2	3	4	5,5	7,5	11	15	
Mains voltage according to DIN EN 50160 (IEC 38)	single-phase 200V -15% ... 240V +10% 50Hz -5% ... 60Hz +5%							three-phase 380V -15% ... 500V +10% 50Hz -5% ... 60Hz +5%												
Output current / A	1,5	3,3	3,7	4,8	6,9	8,0	11,0	1,5	1,9	2,3	3,0	4,1	5,5	7,1	9,5	14,3	17,0	27,7	33,0	
Peak current for 1min. / A	2,3	5,0	5,6	7,2	10,4	12,0	16,5	2,3	2,9	3,5	4,5	6,2	8,3	10,7	14,3	21,5	25,5	41,6	49,5	
Control functions																				
Frequency setting range	0 – 500Hz																			
Torque boost	specific U/f – characteristics for a variety of applications, vector control																			
Acceleration and decel. time	0,1 – 999,9s																			
DC brake	start via external contact, braking current and braking duration adjustable																			
Frequency setpoint	setpoint potentiometer, 0 ... +10V, ±10V, 0-20mA, 4-20mA																			
Ambient / Storage temperature	-10°C ... +50°C / -25°C ... +70°C																			
Weight / kg	1,5	1,5	1,5	1,5	1,8	1,8	3,1	1,8	1,8	1,8	1,8	1,8	3,1	3,1	3,1	6,5	6,5	11	11	
Order number	2F500.23...							2F500.40...												
	018	037	055	075	110	150	220	037	055	075	110	150	220	003	004	005	007	011	015	
Recommended mains filters (class C2)	27006.			27006.		27006.		27108.				27108.			27108.		27108.		27108.	
	24009			24016		24022		40007				40014			40028		40049			

For line and motor reactors see accessories.

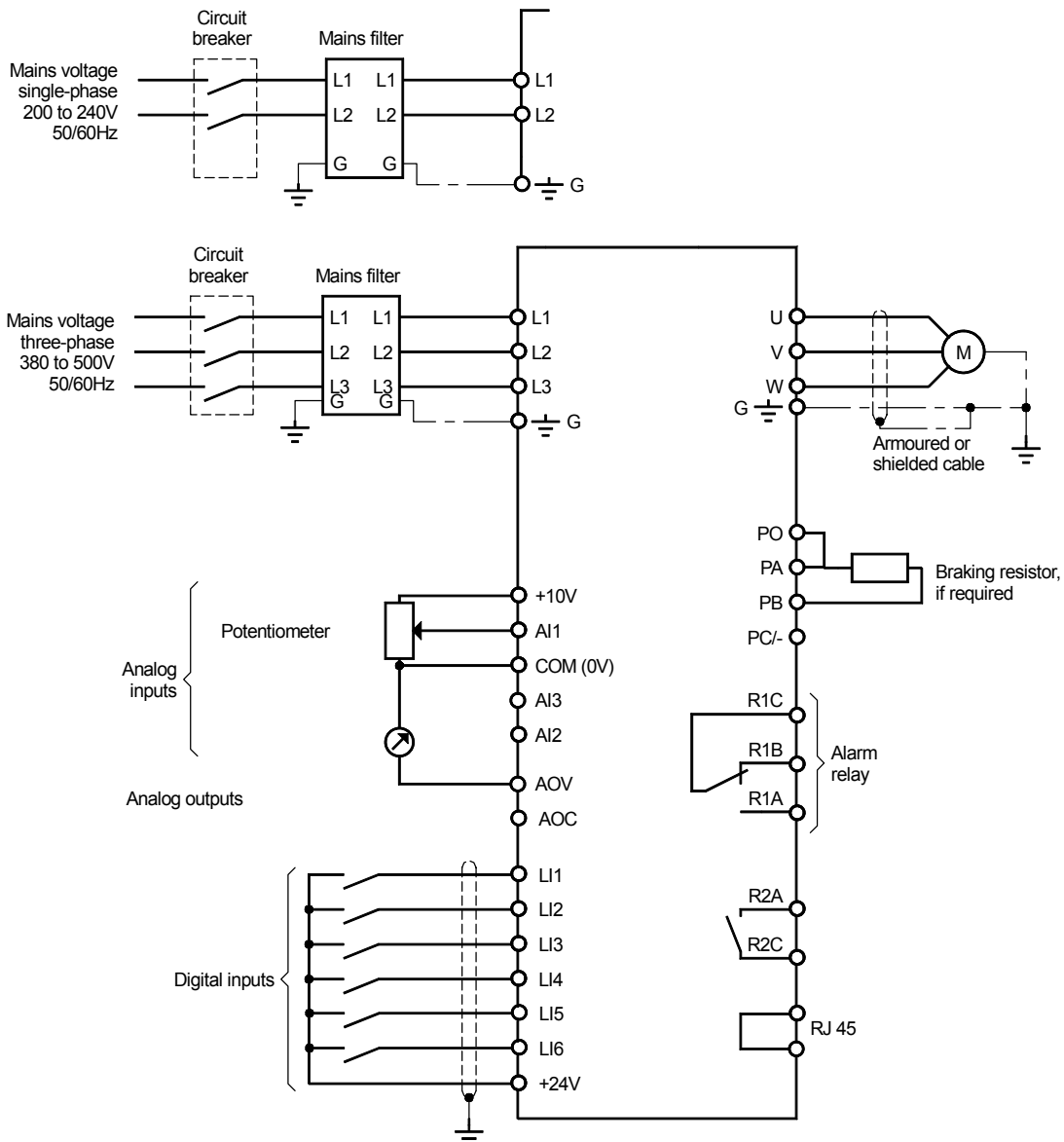
AC drive FUS 018 ... 220/S312, FUS 037 ... 1500/3S312 0,18kW up to 15kW

Dimensions:



	W [mm]	H [mm]	D [mm]
FUS 018/S312	72	145	130
FUS 037/S312	72	145	130
FUS 055/S312	72	145	140
FUS 075/S312	72	145	140
FUS 110/S312	105	143	150
FUS 150/S312	105	143	150
FUS 220/S312	140	184	150
FUS 037/3S312	105	143	150
FUS 055/3S312	105	143	150
FUS 075/3S312	105	143	150
FUS 110/3S312	105	143	150
FUS 150/3S312	105	143	150
FUS 220/3S312	140	184	150
FUS 300/3S312	140	184	150
FUS 400/3S312	140	184	150
FUS 550/3S312	180	232	170
FUS 750/3S312	180	232	170
FUS 1100/3S312	245	330	190
FUS 1500/3S312	245	330	190

Connection Diagram:

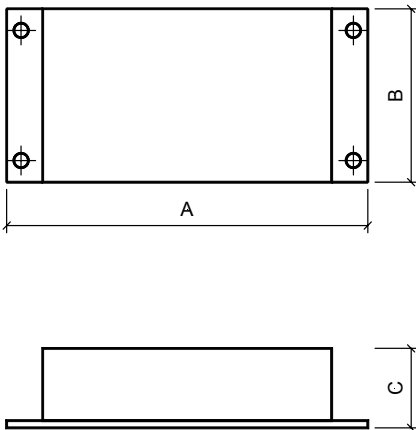


Accessories – AC drive FUS .../S312/3S312

Built-under Mains Filters

Technical Data	NF ... S312 (single-phase)			NF ... 3S312 (three-phase)			
	240/9	240/16	240/22	400/7	400/14	400/28	400/49
Area required mm x mm	140x80	178x110	184x140	178x110	184x140	240x180	320x245
Leakage current	100mA	150mA	80mA	15mA	35mA	45mA	45mA
for Motor shaft power	-0,75kW	-1,5kW	2,2kW	-1,5kW	-4kW	-7,5kW	-15kW
Order number	27006. 24009	27006. 24016	27006. 24022	27108. 40007	27108. 40014	27108. 40028	27108. 40049

Dimensions:



	Dimensions (mm)		
	A	B	C
NF 240/9 S312	140	80	40
NF 240/16 S312	178	110	40
NF 240/22 S312	184	140	60
NF 400/7 3S312	178	110	50
NF 400/14 3S312	184	140	60
NF 400/28 3S312	240	180	60
NF 400/49 3S312	320	245	60

Braking Resistors

Technical data	Braking resistors BW ...			
	075	220	550	1500
Area required / mm x mm	72 x 55	87 x 55	182 x 55	302 x 55
For Motor shaft power / kW	-0,75	-2,2	-5,5	7,5 - 15
Installation	Encapsulated version for mounting onto cooling plate (cable length 300mm)			
Resistance / Ω	220	120	82	56
Power dissipation / kW*	0,15	0,2	0,4	0,6
Degree of protection	IP 55			
Order number	29000.24001	29000.24000	29000.24002	29000.24004

* The power dissipation refers to a cycle time of 120s with a c.d.f. of 10%.

Braking resistors with thermostatic switch are available on request.

The indicated motor powers assigned to the braking resistors apply to a c.d.f. of 10%. For shorter cycle times or higher cyclic duration factors the resistor values are to be adapted to the drive. If this is necessary, please contact us.

Options

	Order number
Mounting plate for DIN rail (S31 – 0,75kW)	29000.24015
Mounting plate for DIN rail (S31 – 1,5kW)	29000.24016

General Accessories

	Order number
Potentiometer 10kΩ (VDE-version)	41750.01103
Rotary button, 20mm	65000.00002
Scale, 50mm x 50mm; 0 - 10	77200.00014

