

Frequency Inverters FUS 3000 ... 20000/3G1E 30 up tp 200kW 4-31

Features:

- ❑ dual rating (HD, LD*)
- ❑ keypad with USB connector (optional)
- ❑ integrated EMC-filter (conform with EN61800-3, categorie C3)
- ❑ „safety enable“-input (conform with EN 954-1)
- ❑ internal mini-PLC
- ❑ 3 expansion slots for different options (Encoder, fieldbus, ...)
- ❑ spring cage connection
- ❑ advanced PID-function (e.g. dancer control)
- ❑ degree of protection IP20
- ❑ overload durability (HD: 200% for 3s and 150% for 1min.)



Frequency Inverters MEGA
FUS 3000 ... 20000/3G1E



Function:

- ❑ accurate control
- ❑ „sensorless vector control“-mode (100% torque at 0Hz)
- ❑ suitable for permanent magnet and induction synchronous motors
- ❑ positioning (with Encoder)

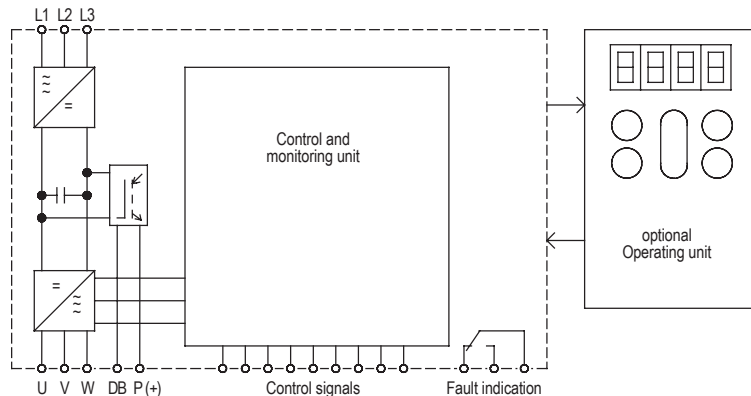
Typical Applications:

pumps
ventilators
conveying machinery
textile machinery
packing machines
lifts and hoisting gear

centrifuges
grinding machines
printing machinery
wood working machines
vibrators
dirves requiring high torque at low speed

Upon Request:

- ❑ range up to 630kW



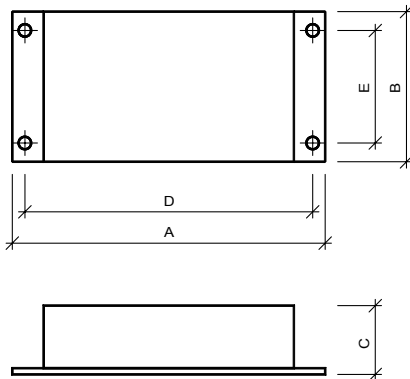
Technical Data	FUS .../3G1E									
	3000	3700	4500	5500	7500	9000	11000	13200	16000	20000
Motor shaft power HD / kW	30	37	45	55	75	90	110	132	160	200
Motor shaft power LD / kW	37	45	55	75	90	110	132	160	200	220
Mains voltage acc. to DIN EN 50160 (IEC 38)	three-phase 380-480V, +-10%, -15%, 50/60Hz, +-5%									
Rated output current HD / A	60	75	91	112	150	176	210	253	304	377
Rated output current LD / A	75	91	112	150	176	210	253	304	377	415
Overload durability (output)	150% for 1min., 200% for 3s									
Control functions										
Frequency setting range	HD: 0 - 500Hz; LD:0-120Hz									
Ramp-up and ram-down time	0 ... 6000s									
DC-brake	operating frequency 0-60Hz, braking time 0-30s, intensity 0 - 100%									
EMC-filter	observed EMC-rule: class C3 (spurious radiation)									
Frequency setpoint	poti 1-5kΩ, 0-±10V, 4-20mA, keypad, fixed frequencies, motor poti									
Ambient/ storage temperature	-10°C ... +50°C / -20°C ... +65°C									
Weight / kg	26,0	27,0	32,0	33,0	42,0	62,0	64,0	103,0	103,0	144,0
Order number	2F200.40030	2F200.40037	2F200.40045	2F200.40055	2F200.40075	2F200.40090	2F200.40110	2F200.40132	2F200.40160	2F200.40200
Recommendet mains filter (class C2), oder no. 27107.48...	100	100 (HD) 180 (LD)	180			180 (HD) 250 (LD)	250	250 (HD) 400 (LD)	400	

* HD – high duty, LD – low duty

Mains filter

Technical Data	NF ... /F1/G1 (three-phase)			
	480/100	480/180	480/250	480/400
Area required / mm x mm	380x90	450x120	386x260	386x260
Leakage current / mA	25,0	37,0	9,0	78,0
for Motor shaft power / kW	-37,0 (HD)	-75,0	-132,0 (HD)	-200,0
Order number 27107.48...	100	181	250	400

Dimensions:



	Dimensions (mm)				
	A	B	C	D	E
NF 480/100/F1/G1	380	90	150	305	65
NF 480/180/F1/G1	451	120	170	365	102
NF 480/250/F1/G1	386	260	115	240	235
NF 480/400/F1/G1	386	260	115	240	235

Intermediate circuit coil

Technical Data	DCR 075	DCR 090	DCR 110	DCR 132	DCR 160	DCR 200	DCR 220
for Motor shaft power / kW	75 (HD)	-90 (HD)	-110 (HD)	-132 (HD)	-160 (HD)	-200 (HD)	-220 (HD)
Dimensions / mm	W	190	190	190	200	210	220
	H	151	161	161	171	171	171
	D	240	250	250	260	290	295
Order number	29000. 28239	29000. 28212	29000. 28213	29000. 28214	29000. 28215	29000. 28216	29000. 28217

Options

	Bestellnummer
Multifunctional Keypad	29000.20621
Standard Keypad	29000.2F201
Encoder-card PG (5V)	29000.2F204
Profibus DP	29000.2F200
CAN Open adaptor	29000.2F205
DeviceNet-card	29000.2F206
Encoder-card PG (12V)	29000.2F207
Converter USB-RS 232/422/485	29000.28241

General Accessories

	Bestellnummer
potentiometer in VDE-design 10kΩ	41750.01103
rotary button, 20mm, complete	65000.00002
scale, 50mm x 50mm; 0 – 10	77200.00014

