




Frequency Inverters FUS 037 ... 220/CV, FUS 075 ... 1100/3CV 0,37kW up to 11kW 4.07

**Features:**

- ☑ compact design
- ☑ easy commissioning and programming
- ☑ flat built-under mains filters available
- ☑ IGBT power stage
- ☑ detachable operating unit
- ☑ rotating field frequency up to 650Hz
- ☑ integrated PID controller
- ☑ integrated PLC
- ☑ optionally with RS 232/485 interface
- ☑ integrated braking chopper
- ☑ integrated mains filter (class A)
- ☑ integrated setpoint potentiometer
- ☑ 6 multi-functional inputs
- ☑ 2 multi-functional outputs
- ☑ for mounting onto DIN rail (up to 4kW)
- ☑ degree of protection: IP20
- ☑ fan controllible



Frequency Inverters  
**FUS 037 ... 220/CV**  
**FUS 075 ... 1100/3CV**  
  

**Function:**

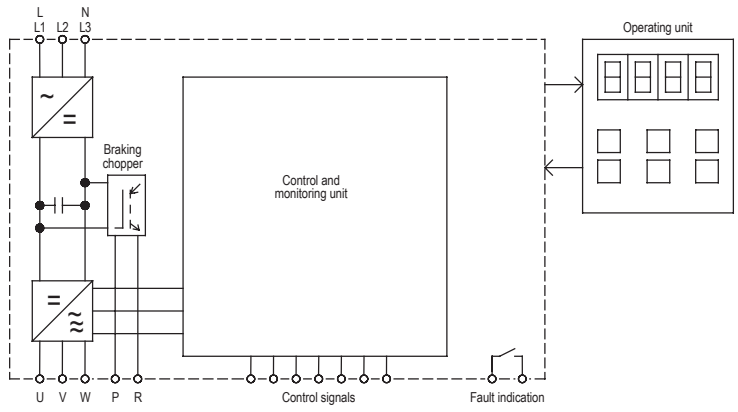
- ☑ control and setpoint entry via terminals and operating unit
- ☑ PWM clock frequency 2-16kHz
- ☑ DC braking (duration, intensity, operating frequency)
- ☑ potential-free control and signaling contacts
- ☑ automatic restart after voltage dip

**Typical Applications:**

- pumps
- centrifuges
- ventilators
- grinding machines
- conveying systems
- printing machines
- textile machines
- wood working machines
- packaging machines
- vibrators

**Upon Request:**

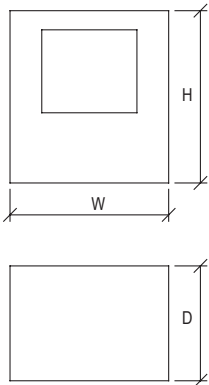
- ☑ Customized enclosures



Technical Data	FUS .../CV				FUS .../3CV						
	037	075	150	220	075	150	220	400	550	750	1100
Motor shaft power in kW	0,37	0,75	1,5	2,2	0,75	1,5	2,2	4	5,5	7,5	11
Mains voltage according to DIN EN 50160 (IEC 38)	Single-phase 200-240V (+10%, -15%) 50/60Hz ±5%				Three-phase 380-480V (+10%, -15%) 50/60Hz ±5%						
Output current	3,1A	4,5A	7,5A	10,5A	2,3A	3,8A	5,2A	8,8A	13A	17,5A	25A
<b>Control functions</b>											
Frequency setting range	0,1 - 650Hz										
Control mode	U/f – characteristic; vector control										
Ramp-up and ramp-down time	0,1 - 3600s										
DC brake	Operating frequency 0,1-10Hz, braking time 0-25,5s, intensity 0-20% UN										
Frequency setpoint	poti 10kΩ, internal poti, 0-10V, 0-20mA, keypad, fixed frequencies										
Ambient / Storage temperature	-10°C ... +40°C / -20°C ... +60°C										
Weight / kg	1,3	1,3	1,8	2,3	1,3	1,3	2,2	2,2	6,6	6,6	6,6
Order number	2F000. 23037	2F000. 23075	2F000. 23150	2F000. 23220	2F100. 40075	2F100. 40150	2F100. 40220	2F100. 40004	2F100. 40005	2F100. 40007	2F100. 40011
Recommended mains filters	27007.26011		27007.26027		27110.53005		27110.53010		27110.53028		

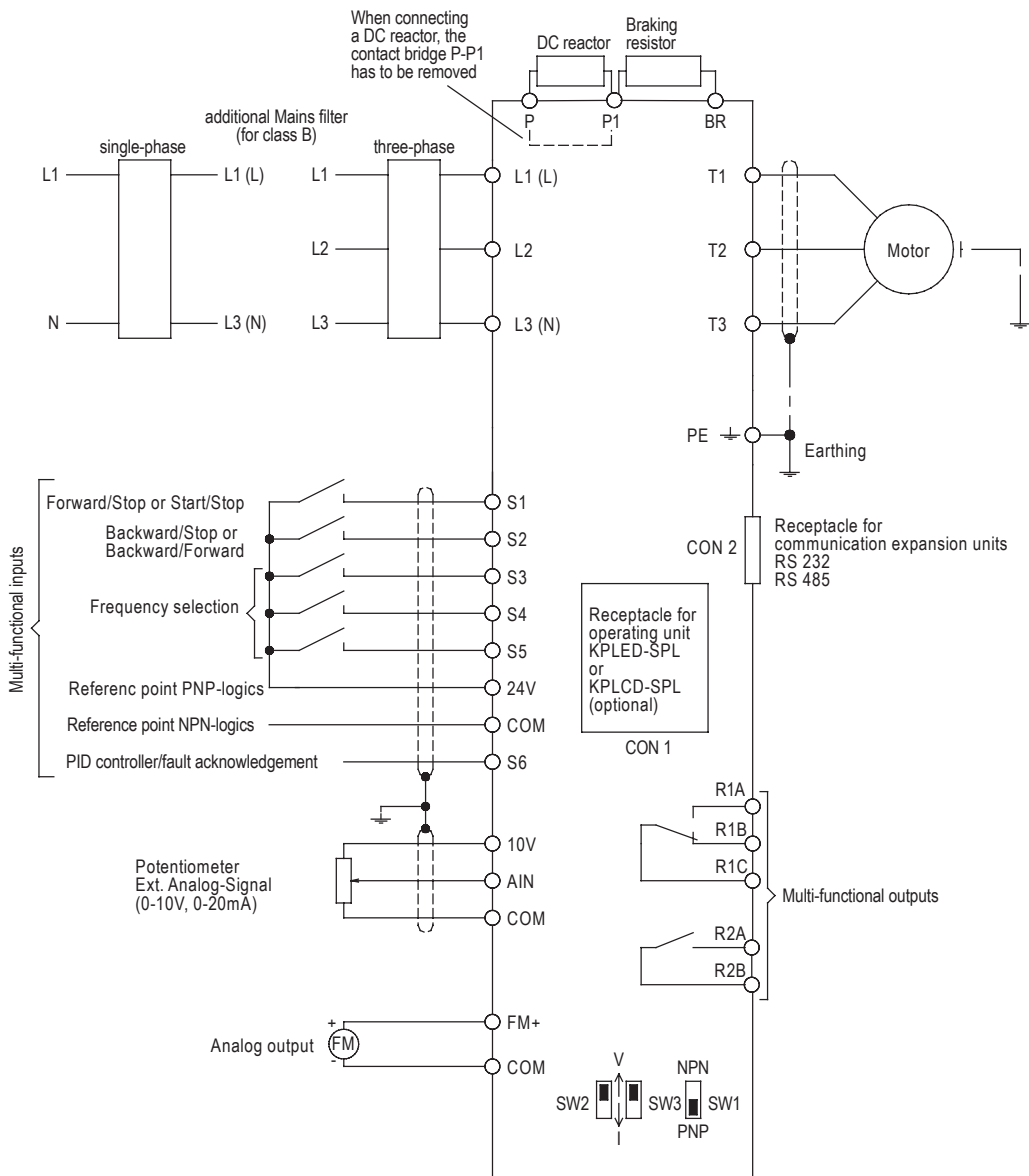
For line and motor reactors see accessories.

**Dimensions:**



	W [mm]	H [mm]	D [mm]
FUS 037/CV	90	163	147
FUS 075/CV	90	163	147
FUS 150/CV	128	187,1	148
FUS 220/CV	128	187,1	148
FUS 075/3CV	90	163	147
FUS 150/3CV	90	163	147
FUS 220/3CV	128	187,1	148
FUS 400/3CV	128	187,1	148
FUS 550/3CV	186	260	195
FUS 750/3CV	186	260	195
FUS 1100/3CV	186	260	195

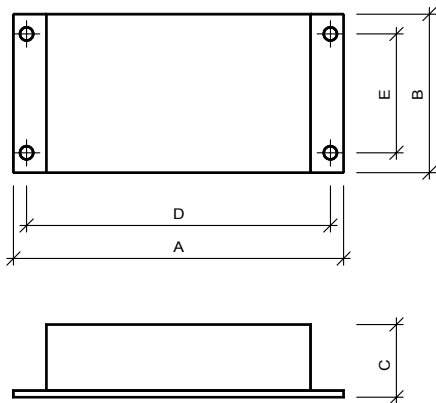
**Connection Diagram:**



**Built-under Mains Filters**

Technical Data	NF .../CV		NF .../3CV		
	264/11	264/27	528/5	528/10	528/28
Area required mm x mm	192 x 91	215 x 128	192 x 91	215 x 128	289 x 188
Leakage current	16mA	21mA	19,4mA	27mA	166mA
for Motor shaft power	- 0,75kW	-2,2kW	-1,5kW	-4kW	-11kW
Order number	27007.26011	27007.26027	27110.53005	27110.53010	27110.53028

**Dimensions:**



	Dimensions (mm)				
	A	B	C	D	E
NF 264/11/CV	192	91	28	181	74
NF 264/27/CV	215	128	37	204	111
NF 528/5/3CV	192	91	28	181	74
NF 528/10/3CV	215	128	37	204	111
NF 528/28/3CV	289	188	42	278	165

**Braking Resistors**

Technical Data	BW/CV ...									
	075/1	150/1	220/1	075/2	150/2	220/2	400	550	750	1100
Dimensions in mm Length L	251	251	274	251	251	274	395	470	535	615
Width W	28	28	34	28	28	34	34	50	50	50
Height H	32	32	38	32	32	38	38	45	55	55
for Motor shaft power / kW	-0,75	1,5	2,2	0,75	1,5	2,2	4	5,5	7,5	11
Resistance / Ω	200	100	70	750	400	250	150	130	100	50
Power rating / W	150	150	260	150	150	260	400	600	800	1600
Order number	29000.2F001	29000.2F002	29000.2F003	29000.2F101	29000.2F102	29000.2F103	29000.2F104	29000.2F105	29000.2F106	29000.2F107

**Options**

	Order number
RS 232	29000.2F004
RS 485	29000.2F005
Operator module (LCD)	29000.2F013
Memory module	29000.2F006
Extension cable 0,5m	29000.2F007
Extension cable 1m	29000.2F008
Extension cable 2m	29000.2F009
Extension cable 3m	29000.2F010
Extension cable 5m	29000.2F011
Converter USB-RS 232/422/485	29000.28241

**General Accessories**

	Order number
Potentiometer 10kΩ (VDE-version)	41750.01103
Rotary button, 20mm	65000.00002
Scale, 50mm x 50mm; 0 - 10	77200.00014

