

Frequency Inverters FUS 020 ... 220/E2, FUS 075 ... 220/3E2 0,2kW up to 2,2kW 4.01

Features:

- ☑ very compact design
- ☑ fully digital control
- ☑ easy programming
- ☑ max. rotating field frequency 200Hz
- ☑ DC brake
- ☑ integrated mains filter (radio interference suppression level A)
- ☑ degree of protection IP20
- ☑ IGBT - power stage
- ☑ integrated braking chopper from FUS 150/E2 and FUS.../3E2
- ☑ 3 fixed frequencies



Frequency Inverters
FUS 020 ... 220/E2
FUS 075 ... 220/3E2



Function:

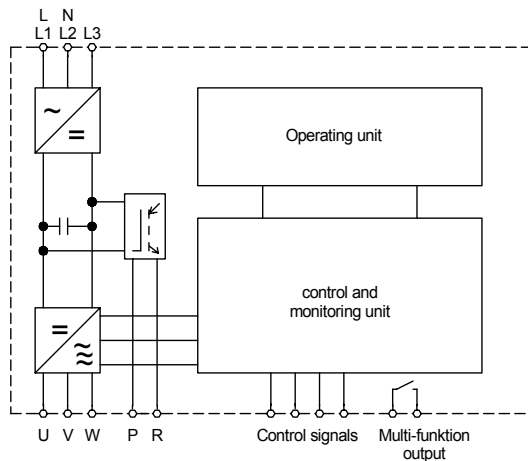
- ☑ control and setpoint entry via terminals and operating unit
- ☑ PWM clock frequency 4-16kHz
- ☑ DC braking (duration, intensity, operating frequency)
- ☑ potential-free control and signalling contacts
- ☑ restart after voltage dip

Typical Applications:

- | | |
|---------------------|-----------------------|
| pumps | centrifuges |
| ventilators | grinding machines |
| conveying systems | printing machines |
| textile machinery | wood working machines |
| packaging machinery | vibrators |

Upon Request:

- ☑ Customized Enclosures

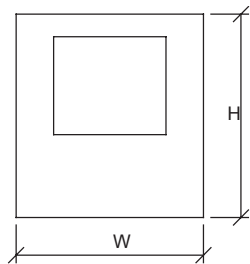


Technical Data	FUS ... /E2					FUS ... /3E2		
	020	037	075	150	220	075	150	220
Motor shaft power / kW	0,2	0,37	0,75	1,5	2,2	0,75	1,5	2,2
Mains voltage according to DIN EN 50160 (IEC 38)	single-phase 200-240V +10%, -15% 50/60Hz ±5%					three-phase 380-460V, +10%, -15% 50/60Hz ±5%		
Output current	1,4A	2,3A	4,2A	7,5A	10,5A	2,3A	3,8A	5,2A
Peak current for 1min.	2,1A	3,4A	6,3A	11,3A	15,8A	3,4A	5,7A	7,8A
Control Functions								
Frequency setting range	1 - 200Hz							
Torque boost	6 U/f - characteristics							
Ramp-up and ramp-down time	0,1 - 999s							
DC brake	operating frequency 1-10Hz, braking time 0-25s, intensity 0 - 20%							
Frequency setpoint	poti 10kΩ, 0-10V, 0-20mA, 4-20mA, keypad							
Ambient / Storage temperature	-10°C ... +50°C / -20°C ... +55°C							
Weight / kg	0,8	0,8	0,8	1,9	1,8	1,6	1,6	1,6
Order number	24800. 23020	24800. 23037	24800. 23075	24800. 23150	24800. 23220	24800. 40075	24800. 40150	24800. 40220
Recommended mains filters	27003.25010			27004.25020		27000.40010		

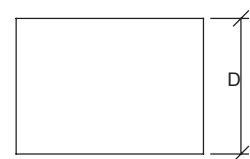
For line and motor reactors see accessories.

4.02 Frequency Inverters FUS 020 ... 220/E2, FUS 075 ... 220/3E2 0,2 up to 2,2kW

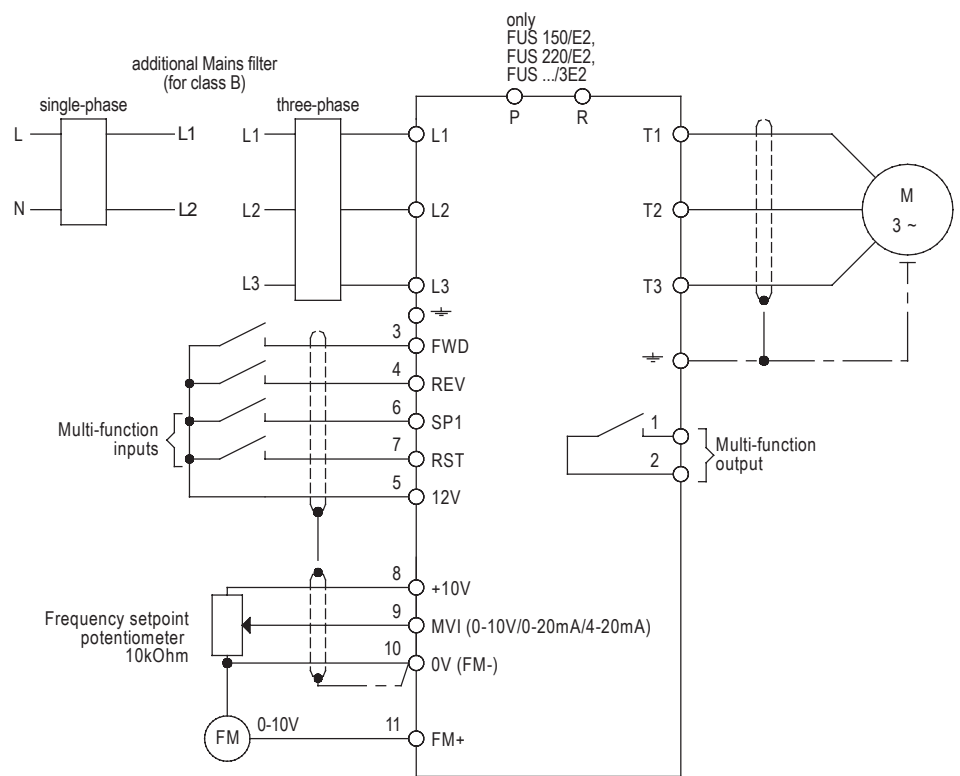
Dimensions:



	W [mm]	H [mm]	D [mm]
FUS 020/E2	72	132	118
FUS 037/E2	72	132	118
FUS 075/E2	72	132	118
FUS 150/E2	118	143	172
FUS 220/E2	118	143	172
FUS 075/3E2	118	143	172
FUS 150/3E2	118	143	172
FUS 220/3E2	118	143	172



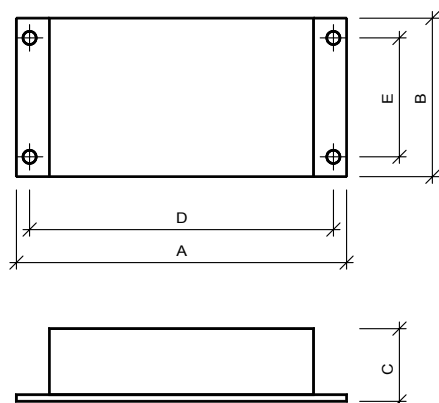
Connection Diagram:



Built-under Mains filter

Technical Data	NF ... /E2 (single-phase)		NF ... /3E2 (three-phase)
	230/10	230/20	400/10
Area required mmxmm	156x76	170x122	170x122
for Motor shaft power	- 0,75kW	-2,2kW	-2,2kW
Order number	27003.25010	27004.25020	27000.40010

Dimensions:



	Dimensions (mm)				
	A	B	C	D	E
NF 230/10/E2	156	76	25	145	60
NF 230/20/E2	170	122	38	156	106
NF 400/10/3E2	170	122	38	156	106

Braking Resistors (refer to FUS .../CV/3CV)

Technical Data	Braking Resistors BW/CV ...				
	150/1	220/1	075/2	150/2	220/2
Dimensions in mm	Length L	251	274	251	274
	Width W	28	34	28	34
	Height H	32	38	32	38
for Motor shaft power / kW	1,5	2,2	0,75	1,5	2,2
Resistor / Ω	100	70	750	400	250
Power output / W	150	260	150	150	260
Frequency Inverters	FUS 150/E2	FUS 220/E2	FUS 075/3E2	FUS 150/3E2	FUS 220/3E2
Order number	29000.2F002	29000.2F003	29000.2F101	29000.2F102	29000.2F103

Options

	Order number
Mounting plate E2 for DIN-rail	29000.24800

General Accessories

	Order number
potentiometer in VDE-design 10k Ω	41750.01103
rotary button, 20mm, complete	65000.00002
scale, 50mm x 50mm; 0 - 10	77200.00014

